



CNF Biennial 2009

Gaborone, Botswana
Wednesday 24 and Thursday 25 June 2009
hosted by the Nurses Association of Botswana



Commonwealth Nurses Federation



WEDNESDAY 24 JUNE 2009

0830-1000

Opening ceremony and welcome

Devotion: Reverend Malebogo Muriel Mothibi

United Congregational Church of Southern Africa

Welcome: His Worship Mr Harry Mothei Mayor of Gaborone

Ms Keabitsa Ramantele President NAB

Speech: The Honourable Mrs Lesego Motsumi Minister of Health Botswana

Thanks: Mrs Margaret Kobue (former) CNF and NAB President

Traditional dance group

Opening: Miss Susie Kong President CNF



1000-1030

Morning refreshments

1030-1100

Introduction of CNF Board

Introduction of delegates

1100-1300

Achieving a sustainable nursing and midwifery workforce for the future

- ♣ **Making a difference:** achieving potential for national nursing associations - Marion Guy and Brenda Close (New Zealand)
- ♣ **Making a difference:** achieving industrial outcomes - Ramziah Bt Ahmad (Malaysia)
- ♣ **Making a difference:** achieving political outcomes - Nick Blake (Australia)

1300-1400

Lunch

1400-1600

Achieving a sustainable nursing and midwifery workforce for the future

- ♣ **Making a difference:** the impact of migration on a sustainable nursing and midwifery workforce - Geetha Feringa and Gloria Thupayagale-Tshweneagae (Botswana)
- ♣ **Making a difference:** - the impact of HIV and AIDS on a sustainable nursing and midwifery workforce - Janet Obuni (Uganda)
- ♣ **Making a difference:** the perspective of an African student nurse - Clarissa Bombi (Cameroon)

1600-1700

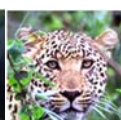
Achieving a sustainable nursing and midwifery workforce for the future

- ♣ Migration check list
- ♣ Discussion and recommendations

1830-2230

Biennial Dinner Dance

The Courtyard @ Botswana Craft



Commonwealth Nurses Federation



CNF Biennial 2009

Gaborone, Botswana
Wednesday 24 and Thursday 25 June 2009
hosted by the Nurses Association of Botswana



Commonwealth Nurses Federation



THURSDAY 25 JUNE 2009

0830-1000

CNF Biennial meeting

- * President's report
- * Executive secretary's report
- * Treasurer's report



1000-1030

Morning refreshments

1030-1130

Country reports

- * Atlantic region
- * East, Central and Southern Africa Region
- * Europe Region
- * Pacific Region
- * South Asia Region
- * West Africa Region



1130-1300

Achieving a sustainable nursing and midwifery workforce for the future

Making a difference - future directions and actions for the CNF
Regional group work and generation of recommendations and action plans
Discussion and recommendations

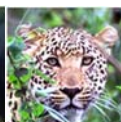
1300-1400

Lunch

1400-1500

Close

Mr Lebonaamang Mokalake Assistant Minister for Local Government Botswana
Ms Keabitsa Ramantele President NAB
Miss Susie Kong President CNF



Commonwealth Nurses Federation

THE CNF PRESIDENT AND BOARD
THANK YOU FOR YOUR PARTICIPATION
AND WISH YOU A SAFE JOURNEY
HOME